



User Manual




v 2.0





Contents

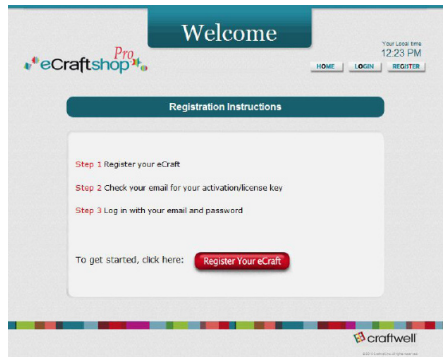
1. Registering your eCraft.....	1
2. Downloading eCraftshop.....	1
3. Installing eCraftshop.....	2
4. Connecting the eCraft to the Computer.....	5
5. Getting Started.....	5
6. Tool Bars.....	6
Main Tool Bar.....	6
Drawing Tool Bar.....	7
7. My Library.....	8
Search Images.....	8
Viewing Image Cards.....	9
How to Update the Image library.....	9
8. Manipulating Elements.....	10
Cut or Draw Selection.....	10
Style.....	11
Welding.....	12
9. Importing SVG Images.....	13
10. Print Preview.....	13
11. Cutting.....	14
12. How to Validate Image Cards.....	15
13. FAQ.....	16
14. Technical Support.....	17



1. Registering your eCraft

All users will need to register their new eCraft machine to activate their product warranty. After successfully registering your eCraft machine you will receive an email to confirm your registration. This email will also provide you with your login, password and your Activation Key which is necessary to install the software.

1. Register your eCraft machine online at:
<http://register.ecraftcentral.com>
2. Click on the **Register Your eCraft** button



3. Enter all required information on the registration form

Note: You will need to enter your eCraft Serial Number. You will find this 13 character serial number located on a sticker on the bottom of your eCraft machine.

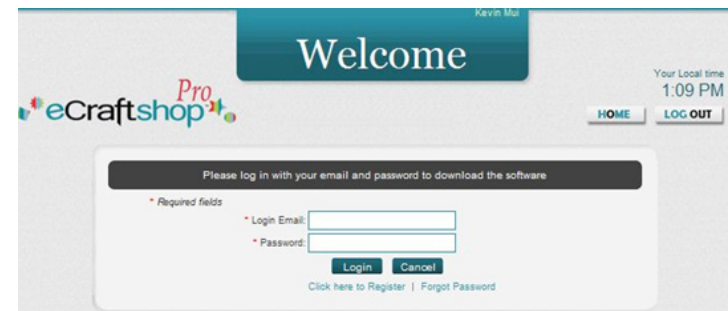
4. Review and accept the Terms & Conditions
5. Click Save.

2. Downloading eCraftshop

After completing your product registration, you can download the eCraftshop software to your computer.

1. After registering your eCraft you will be directed to our Welcome page to login. You can also get to this site online at:

<http://register.ecraftcentral.com/FrontEnd/UserLogin.aspx>



2. Enter your Login Email and Password. This was emailed to you after you registered your eCraft
3. On the Download screen, click the Download button to download the installation file

Note: Please also review the FAQ section on this page for more information.

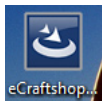
4. When prompted to Open or Save the file, click Save
5. Save file to your computer's desktop.

3. Installing eCraftshop

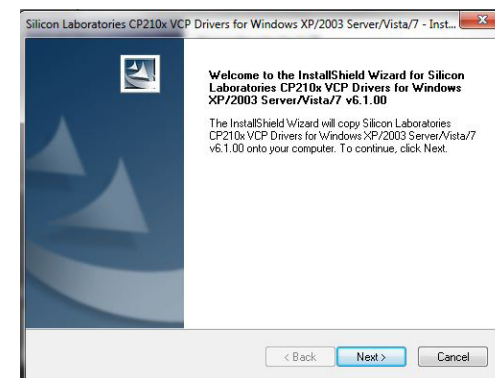
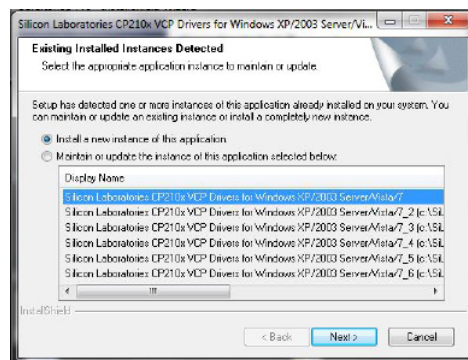
Follow the steps below to install the eCraftshop software:

Note: This software is currently only available for Windows. The Installation wizard will install both the driver and software.

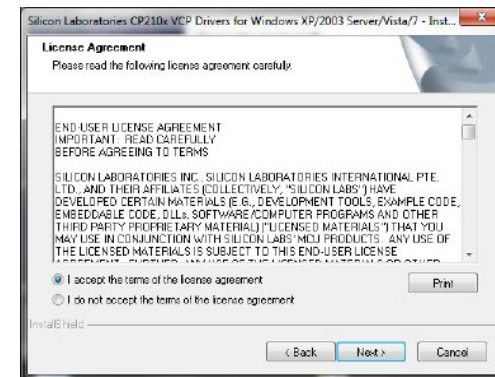
Please uninstall the previous version of eCraftshop before installing a new version of the software. Refer to FAQ “How do I uninstall eCraftshop” for instructions.



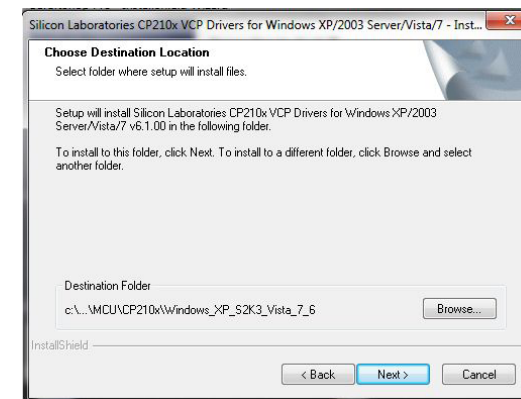
1. Go to your desktop or the area of your computer where you downloaded and saved the installation file.
2. Click the setup file eCraftshopPro_v2 and then click Run to begin the installation process
3. If you get following screen, the system detected that existing drivers were installed. Select option Install a new instance of this application and click Next



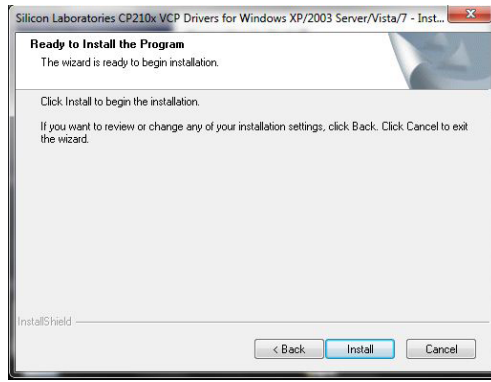
4. Click Next



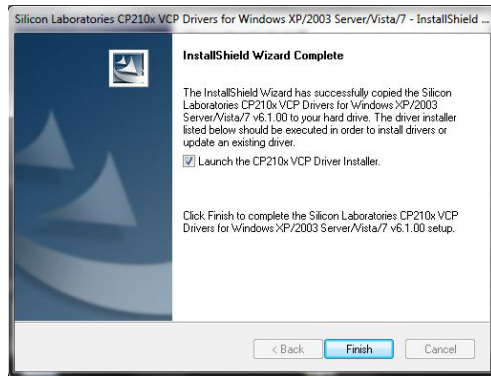
5. Accept the End User License Agreement and click Next



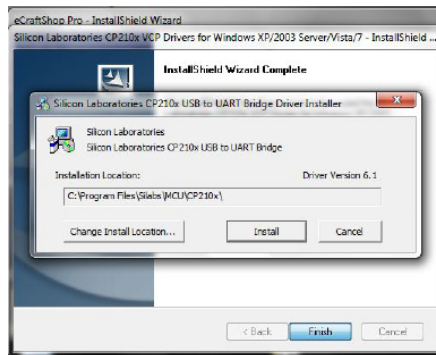
6. Click Next



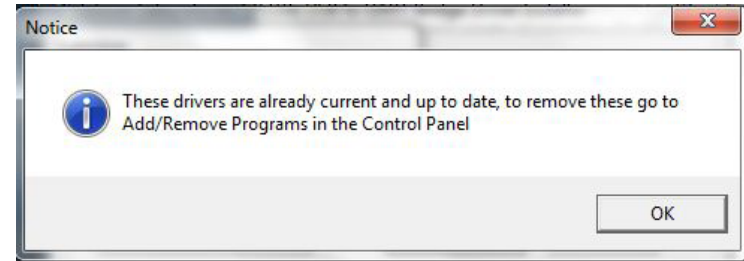
7. Click Install



8. Click Finish



9. Click Install button to complete driver installation



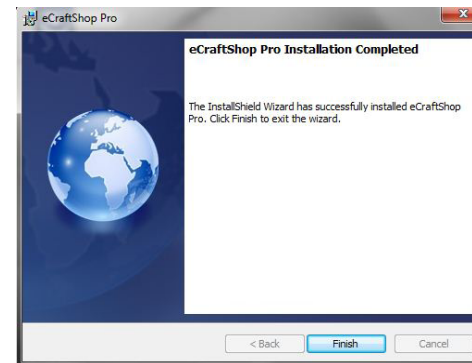
Note: If you get the above screen, the system has identified that you already have the latest driver. Click OK to continue.



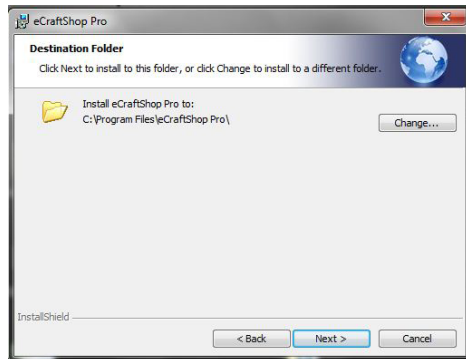
10. Click Next to start installing eCraftshop



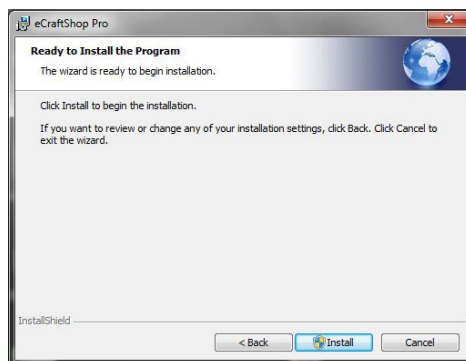
11. Accept the eCraftshop License Agreement and click Next



14. Click Finish when eCraftshop installation is complete



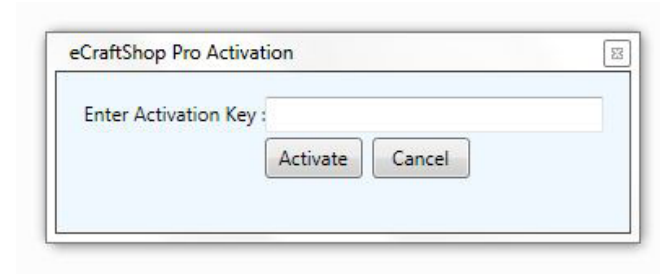
12. Click Next



13. Click Install

4. Connecting the eCraft to the Computer

Locate the USB cable provided with your eCraft machine. Then locate the USB port on the side of the machine (it is next to the SD Card Slot), and plug in one end of the cable. Then plug in the other end of the USB cable to an open USB port on your computer.



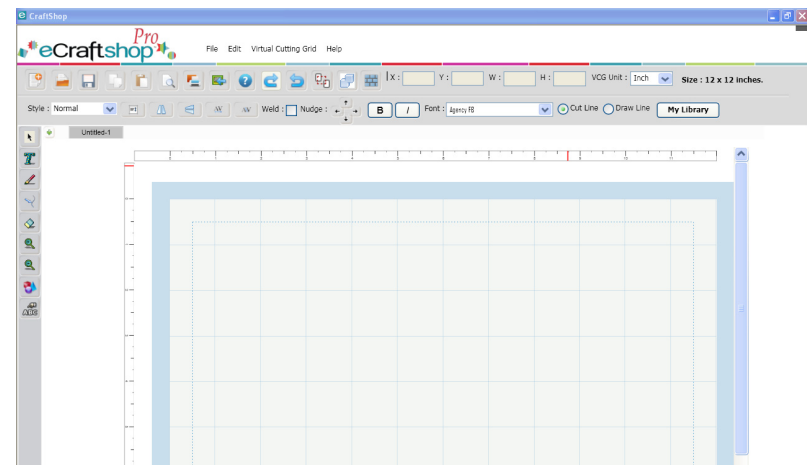
5. Getting Started

After successfully installing the eCraftshop software you should see an icon on your desktop similar to the one pictured below:



Double click the icon to launch the software. This will open a new project. A window will appear with a white grid; this grid represents your page. All design elements will be placed within this area.

Note: The first time you install and open eCraftshop, the system will prompt you to enter an **Activation Key**. This key was provided in the email sent to you after you registered your eCraft machine. Please refer to the email to obtain the key. Enter the Activation Key exactly as it appears in your email onto the screen and click the Activate button.



Around the grid there is a ruler so you can measure your project. This is 11.75" by any length. Additionally, you will see a dotted line that you must keep your project within or when you go to cut the project will go off the page.

6. Tool Bars

Along with the grid, when you open eCraftshop, a tool bar will be available at the top and the left side of the window. You can access most features and options from these tool bars.

Main Tool Bar



New Document: Open a new page. Prompts user for page length selection. This will open in a tab next to the currently open page.



Open: Opens an existing project.



Save: Saves a document.



Copy: Makes a copy of a selection.



Paste: Inserts the most recently copied selection on your page.



Print Preview: Views images as they will appear when cut.



Send to eCraft: Sends the project to the eCraft Cutter.



Import SVG: This feature allows you to bring a file in the SVG format into the eCraftshop software for cutting on the eCraft.



Help: Instructions on how to use the software.



Redo: If you have removed an element you can put it back by using this button.



Undo: If you have placed an element that you want to remove you can click here to remove the last element added to the design.



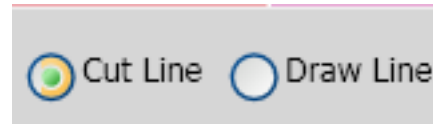
Ungroup Text: If you type text it will appear as one shape that can be moved together, if you ungroup the text you can move the letters separately.



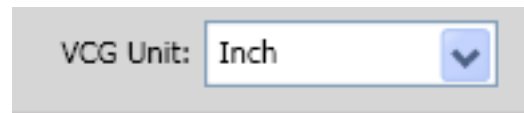
MultiSelect: Click **MultiSelect**, then use mouse to select multiple pictures, words, etc. to move or weld them together.



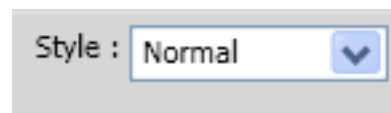
Auto-Fill: If you have created an image you need many copies of; this feature allows you to enter the number you want.



Select the option to draw or cut a line in a drawing. **Note:** You can also achieve this by right clicking on an image.



From drop down, select if you want the grid measured in Inches or Centimeters.



From drop-down, select the style you want to apply to your project. Choose from **Normal**, **Shadow**, **BlackOut**, or **Shadow Blackout**.



Center: Align your project with the centre of the page.



Flip Horizontal: Flip a selected element horizontally.



Flip Vertically: Flip a selected element vertically.



Kern +: This will add space between letters you have added to your project.



Kern -: This will decrease the space between letters in your project.



This feature can join letters and pictures together to form a banner or other connected projects. See the section on Welding for instructions.



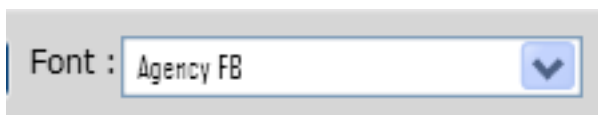
Nudge: Use arrows to slightly move an element on the page.



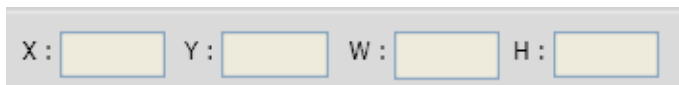
Bold: Selecting a letter and clicking this will make the image bold.



Italic: Selecting a letter and clicking this will italicize the image.



Fonts: Access your true type fonts that are loaded onto your computer.



X and Y Coordinates: Displays where an element is on a page.

W and H measurement: Displays width and height of the image.

Drawing Tool Bar

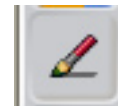
On the left side of the window, there is an additional tool bar. This is where you can easily access features that allow you to draw.



Select: Click this icon and then click on an element of your project, once selected you can manipulate that element.



Add Text: Allows you to add letters and words to your project, click to select then click on the grid where you want.



Pen: Use to draw shapes.



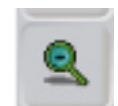
Curved Line: Use to draw a curved line.



Eraser: Use to erase lines you've drawn.



Zoom in: Use to zoom in on your project.

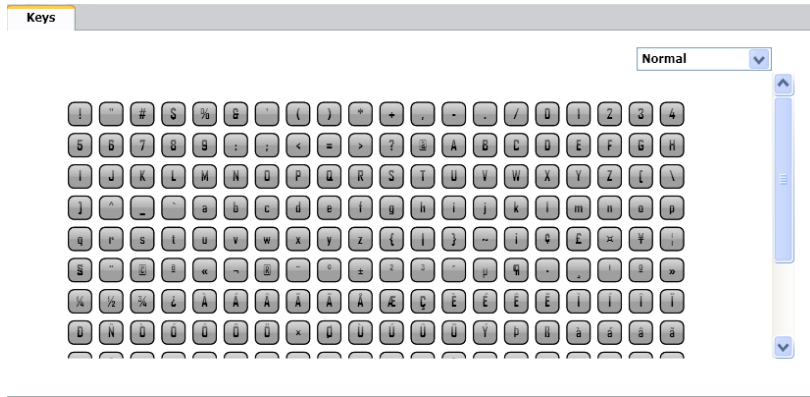


Zoom out: Use to zoom out on your project.



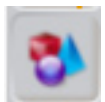
Show/Hide Keyboard: This is a virtual keyboard that allows you to select letters and numbers with your mouse.

After selecting **Show/Hide Keyboard** a virtual keyboard will appear over the grid.



From the Keys tab you can use the mouse to select the letter or symbol you would like to use in your project. You can switch the layout between **Normal** and **QWERTY**, which is the standard layout of a computer keyboard.

Note: Click anywhere outside of the keyboard to close the keyboard screen.



Shapes: Click the Shapes button to view the available shapes.



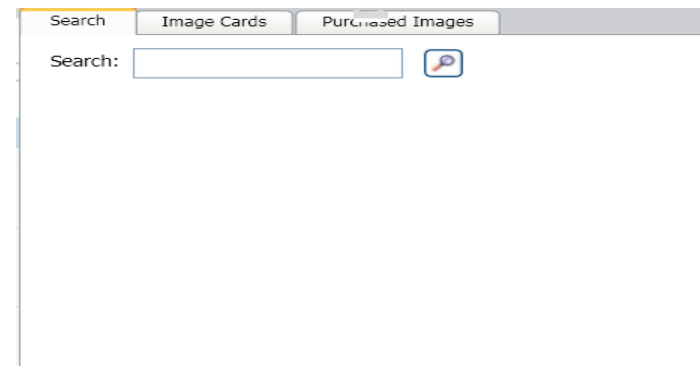
7. My Library

The Library is where you can select a design from the Image Card library to use in your project. Images purchased from eCraftcentral.com (coming soon) will appear under the Purchased Images tab.

My Library

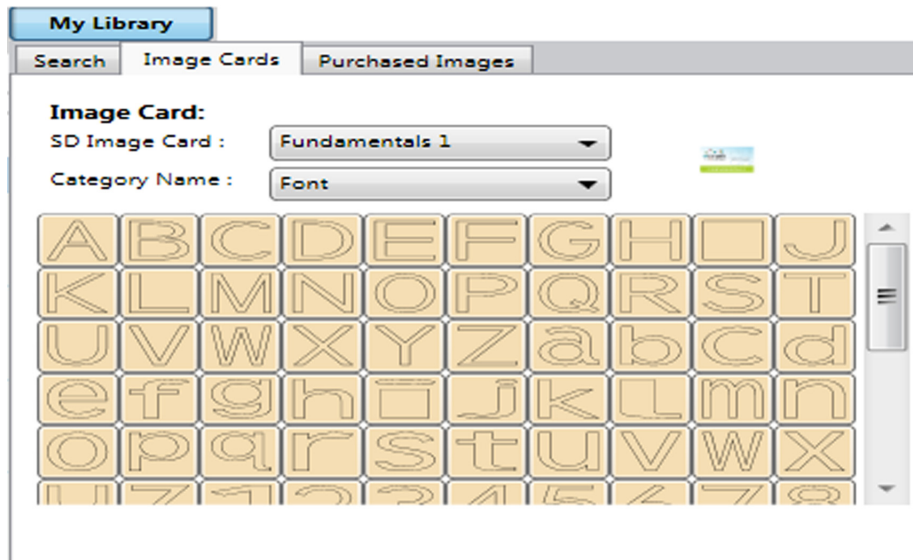
Search Images

Enter search criteria in the search field to look for specific images. For example, butterfly, star, love, etc.



Viewing Image Cards

On the Image Card tab, you will be able to browse through all available eCraft Image Card content. This will allow you to preview whatever you like but you can cut only the content you have purchased.

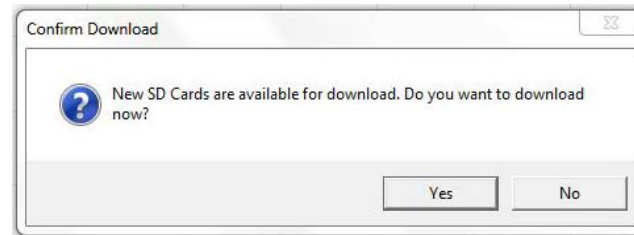


Select the Image Card you want to use, and then select the category.

You can select shapes from multiple cards and categories in the same project.

How to Update the Image library

When updates are available for the Image Card Library you will receive the following prompt:

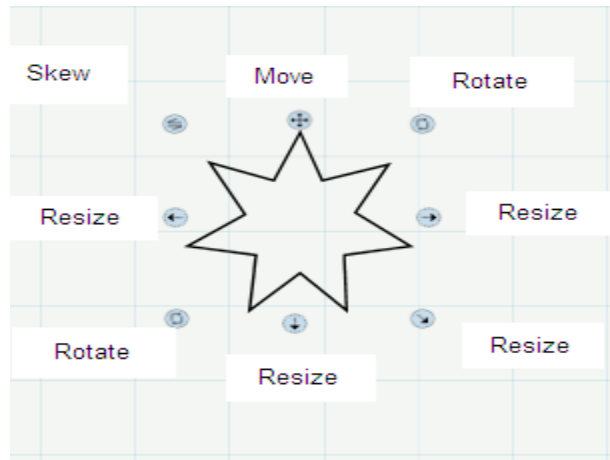


Click **Yes** to download and update your library. Updating your library will give you access to view and try out the latest images on eCraftshop. Remember, you need to purchase the SD Card to cut any image in the SD Card Image Library.

Note: This process may take up to 10 minutes depending on the speed of your internet connection and computer memory.

8. Manipulating Elements

After adding a shape to the cutting grid, you will see a number of icons appear around the shape. If you mouse over the shapes you will see what each icon allows you to do.



Move: Moves the shape on the page.

Rotate: Turns shape clockwise or counterclockwise.

Resize: Makes shape bigger or smaller.

Skew: Tilts shape to any angle.

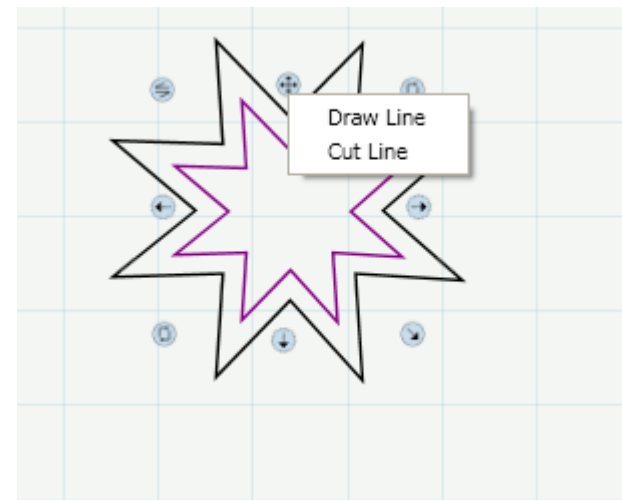
Tip: If there are multiple shapes on the VCG, click multiselect to move all the shapes at the same time.

Cut or Draw Selection

Once you have added selections to the grid you can right click on a selection and decide if you want the eCraft to cut the shape or draw the lines.

Shapes will be Cut by default, but by right clicking on any of the icons surrounding the shape you can select **Draw Line**.

If you select **Draw Line**, the selected shape will turn purple.



Style

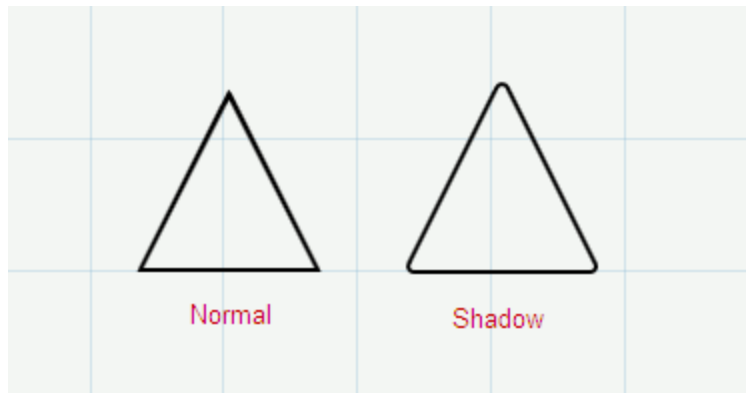
eCraftshop gives you a number of tools to design projects.

Normal

This is the default style setting, elements placed on the grid will be as they appear.

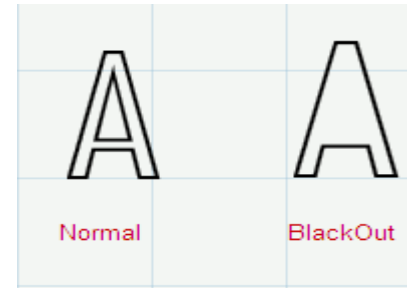
Shadow

This feature allows you to create a layered effect. Once you select an element you can select **Shadow** from the drop down **Style** menu, this would slightly increase the size of the element so that when you cut both the original shape and the one with the **Shadow** effect applied you could layer the cut



BlackOut

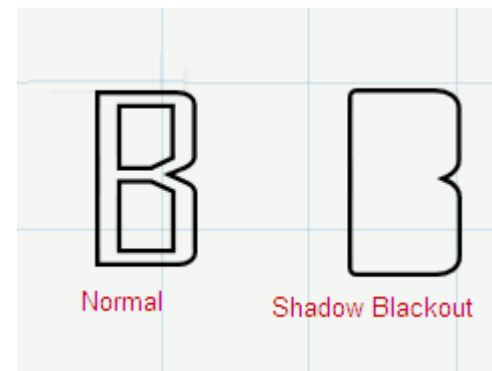
This feature allows you to remove the cuts from the center of a shape, giving the silhouette of the image.



Shadow BlackOut

This Feature allows you to both remove the cuts from the center of a shape and make the image slightly larger for the same layered effect that **Shadow** gives.

In the example below, the **Normal** B could be placed over the **Shadow Blackout** B when cut.



Welding

Welding allows you to combine shapes and letters into one connected shape. This is great for banners and other projects where you want to keep shapes attached.

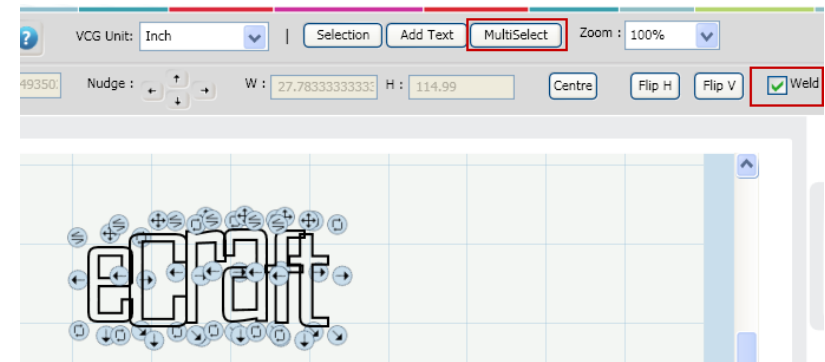
Select the shape or type the word that you want to weld into the project grid. Letters will need to be typed individually.

Once you have decided on a word or design, move the elements into the arrangement you want cut. The letters or shapes should slightly overlap on the areas you want to stay connected through cutting.



Click **MultiSelect**, then use your mouse to highlight the elements you want to connect. You will see the editing icons appear around the entire image.

Click the checkbox next to **Weld**.



Now, click **Print Preview**:

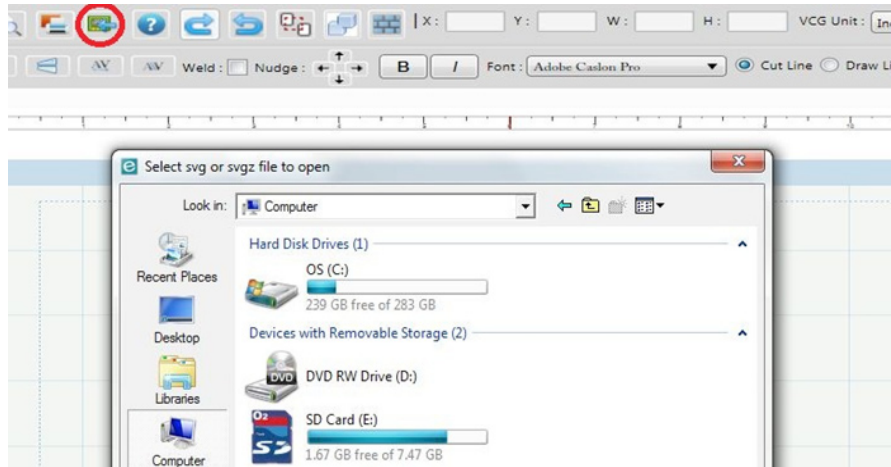


This will allow you to verify that the project has welded where you wanted it to. There will not be lines between the letters or shapes where the project has welded. These areas will not be cut. If necessary, the shapes can be moved to change the welding points.



9. Importing SVG Images

Select Import SVG button on the main tool bar. A window will display and allow you to find the SVG image on your computer. Select the image you want to import and then click the Open button to place the SVG image on the VCG.



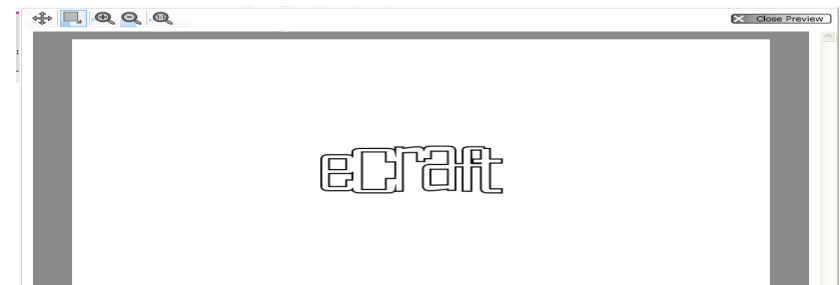
Note: Currently, eCraftshop does not have a “Break Apart” function to separate layers of an .SVG image. We recommend using your third party design software to separate an .svg image and importing each layer into eCraftshop.

10. Print Preview

In addition to viewing a project that has been Welded, **Print Preview** allows you to view your project as it will look once it's been **Cut**.

Once a design is ready for cutting, Click the **Print Preview** button.

This feature has a tool bar at the top of the window that allows you to do a number of things.



Move: allows you to view a different area of the page.



Select Zoom: Highlight the area of the project you want to see close up.



Zoom In: Zoom in on project.



Zoom Out: Zoom out from project.



Fit to Screen: Return to original view of entire page.



Close Preview: Return to grid for editing or cutting.

11. Cutting

Once you have finalized your project you will send it directly to the eCraft Electronic Cutting System.

Use the included USB cable to connect your computer to your eCraft.

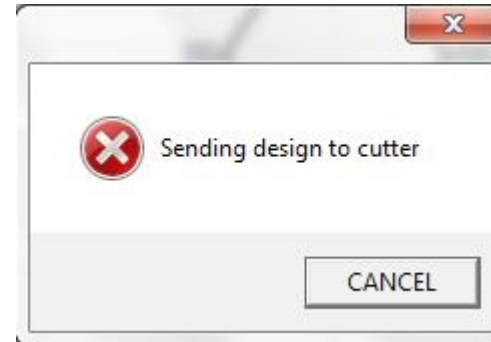
The eCraft can cut from the software using either front cutting mode, paper tray or Roll mode. Load the paper as you would to cut straight from the machine.

Click the **Send to eCraft** button:

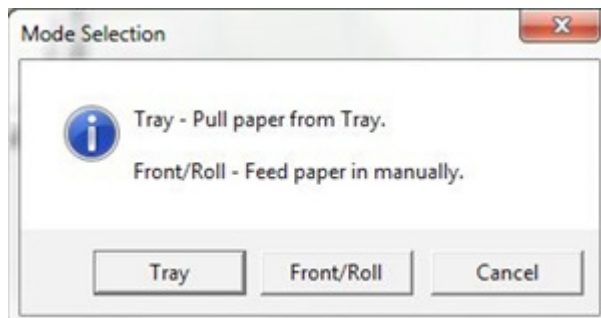


The software will now ask you the mode you wish to choose. Once you make your selection here you image will start cutting.

Note: The eCraft will always start cutting at the lower right side of the paper when using the software.



When the eCraft starts cutting, a message will appear that will allow you to cancel your cut. Click the Cancel button If you wish to stop the cut, otherwise, the eCraft will finish its cutting and the message will disappear.



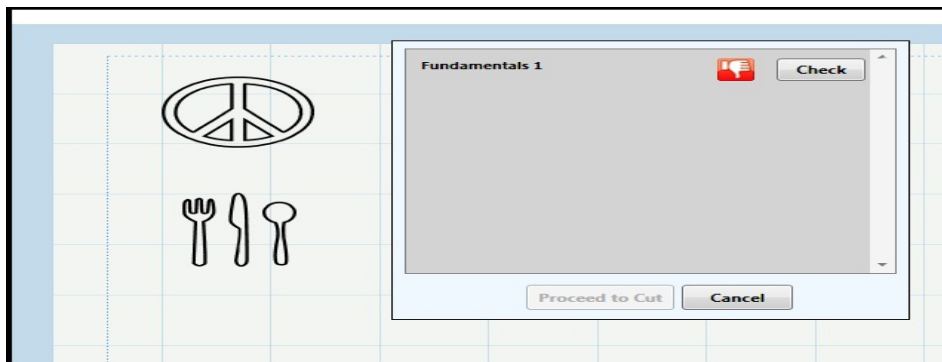
12. How to Validate Image Cards

When cutting an image from your Image Cards Library using the eCraftshop software, you must have the actual Image Card with you when it comes time to cut.

The software will ask you to insert the appropriate Image Card(s) into the eCraft machine. The machine will read the Image Card and perform the cut when it completes its validation process. You may use images from multiple Image Cards. The time for validation will vary. Please wait for validation to complete.

Single Image Card Validation

1. Click Send to eCraft button, the validation window will display and prompt you to insert the appropriate Image Card



2. Insert the Image Card requested into the eCraft Image Card slot
3. Press reset on the eCraft and wait for it to finish resetting
4. Then click the Check button in the validation window to start the validation process
5. A green thumb will appear when validation is complete
6. Now you can click the Proceed to Cut button

Multiple Image Card Validation

This feature allows you to select images from multiple Image cards for cutting.

1. After selecting images from different Image Cards, click the Send to eCraft button and the validation window will display to prompt you to insert the appropriate Image Cards



2. Insert the Image Card requested into the eCraft Image Card slot
3. Press reset on the eCraft and wait for it to finish resetting
4. Then click the Check button in the validation window to start the validation process
5. A green thumb will appear when validation is complete
6. Repeat steps 3 to step 6 until you validate all remaining Image Cards
7. Now you can click the Proceed to Cut button

13. FAQ

Q: What are the system requirements to install eCraftshop?

A: The system requirements to run eCraftshop:

- Window XP SP3, Vista or WIN7 Operating Systems
- 1+Ghz CPU
- 1GB of RAM
- 750 MB free disk space
- USB Port 2.0
- Microsoft .Net Framework 3.0

Q: I receive error message “PCD is not connected”

A: Check to make sure the USB connection between your computer and the eCraft cutter is in place. If that does not work you may need to reset your port connection to the machine. Save your project, then ensure the USB connection is secure, then restart your eCraftshop software.

Q: When installing the software I am asked to insert the activation key but I did not receive one.

A: The activation key is emailed to you when you registered your eCraft machine and downloaded the software. Contact our Technical Support team to receive a new activation key.

Q: I can't cut any of the SD Card images

A: You must have the actual SD Card for the image you want to cut using the software. The validation process will take some time to process.

Q: Can the software be used on multiple computers?

A: eCraftshop is licensed for use on two computers. If you have any issues with your license key, contact Technical Support for assistance.

Q. How do I get software updates?

A: Your eCraftshop software will notify you when a new version update is available for download. Follow the instructions to download the new install file. You must uninstall the existing software before you install the new version. Future updates will not require this step.

Q: What happens to my saved projects when I update my software?

A: You will not lose any saved projects.

Q: I get a message saying new SD Image Cards are available for download. What does this mean?

A: Your software will update your SD Card Library with the latest SD Card images when available. Updating your library will give you access to view and try out the latest images on eCraftshop. Remember, you need to purchase the SD Card to cut any image in the SD Card Image Library.

Note: The initial update may take up to 10 minutes depending on the speed of your internet connection and computer memory.

Q: Why do I see the message “Loading Library” everytime I open the software?

Each time you launch the software it will check to see if new images are available for download. This process should only take a few minutes depending on the speed of your Internet connection. If new images are available, the software will notify you and ask to update the Image Card Library.



13. FAQ (Continued)

Q: How do I uninstall eCraftshop?

A: If you need to uninstall the eCraftshop software, follow these steps:

1. Go to “Start”, select “Control Panels” and then “Add or Remove Programs”
2. Select eCraftshop from the list, then click “Remove”
3. Choose “Uninstall” and follow the instructions

OR

1. Go to “Start”, then “All Programs”, then “eCraftshop”
2. Choose “Uninstall” from the menu. This will start the Uninstall Wizard.

Q: Why are designs getting cut off?

A: Please ensure you have loaded the paper properly into position especially when you choose to load the paper manually into the eCraft machine. Also, check to see if your designs on eCraftshop are within the boundaries of the virtual cutting grid.

Q: Where can I go for user support or to provide feedback?

A: The eCraft Community on our website (coming soon) is a great place for anyone just starting and looking for tips, fresh ideas or for experts who want to share their wonderful knowledge. We highly recommend you tap into this knowledge base. We value your suggestions to improve the quality of our products.

14. Contact Technical Support

If you're having issues with the eCraftshop software and need further assistance, please contact our Technical Support team via email at tech@craftwellusa.com or call 888-315-8885 ext 85.